

# PORT DISCOVERY Children's Museum



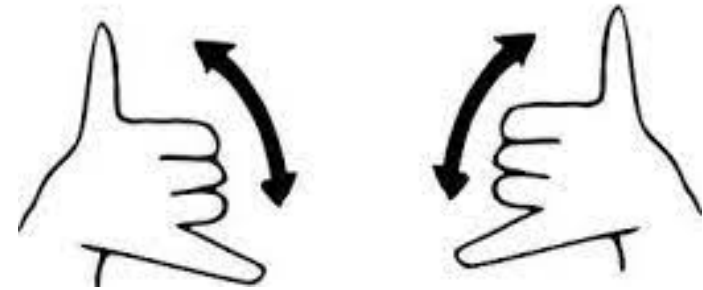
## Wonder Widgets

Created by Laurie Moran, M.Ed.

Going to Port Discovery Children's Museum is fun. I can play at the museum.



play



Wonder Widget's is an exhibit in the museum.



At Wonder Widgets, I can play by myself or with a friend.

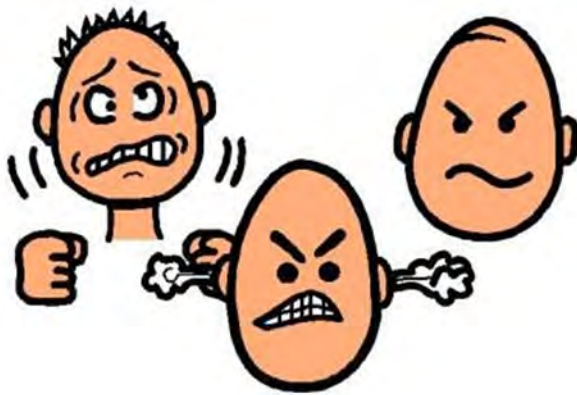


I can ask a kid to play a game with me.





Sometimes, asking a kid to play with me can be hard. I know I can do it!



To play, there are directions for Wonder Widgets.



To play, I can push the yellow button to start.





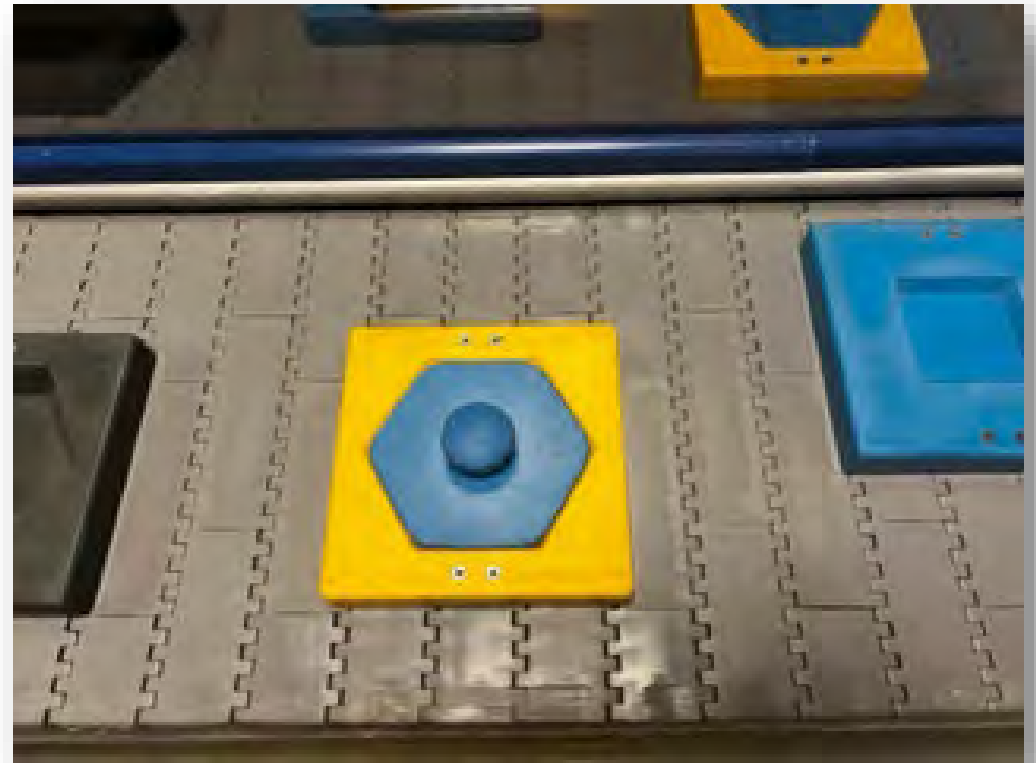
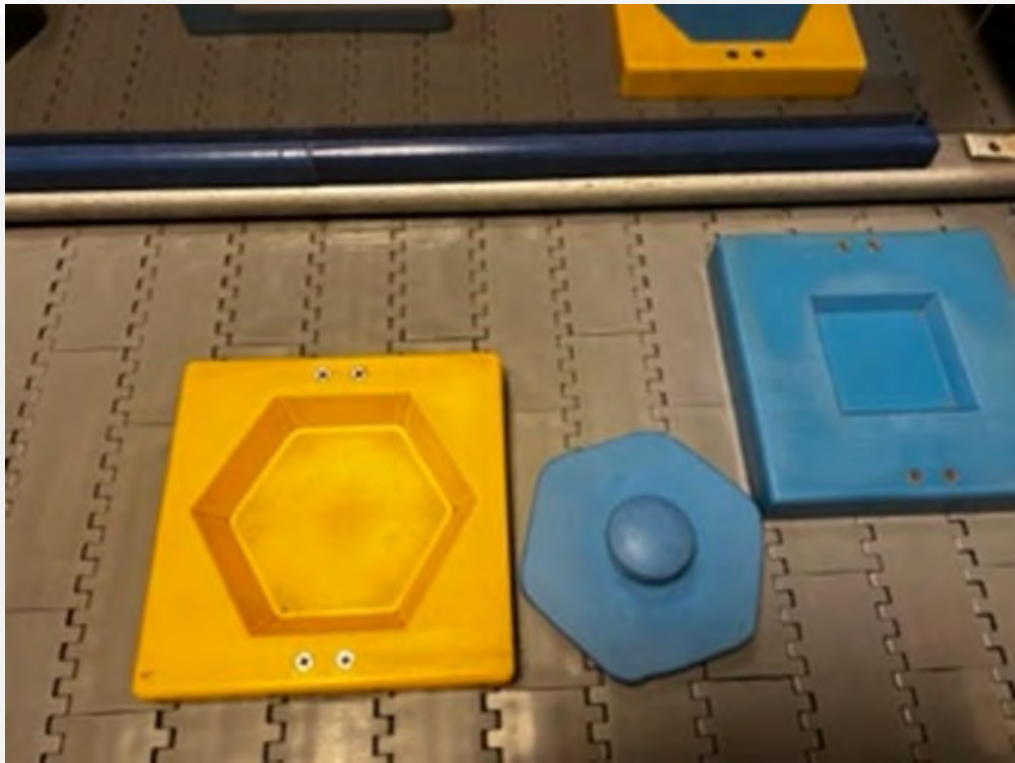
When I push the button, the gray belt moves.



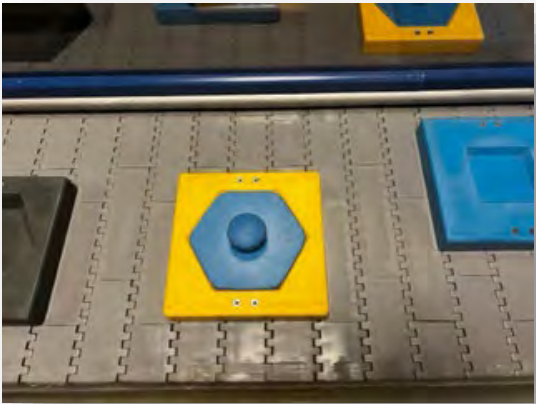
To play, I pick up the shapes.



I match the shapes with the widgets on the gray belt.



Sometimes, matching the shapes can be fun!



fun

The more shapes I match, the more points I get.



I can see how many points. I look on the screen. I can see the red numbers.





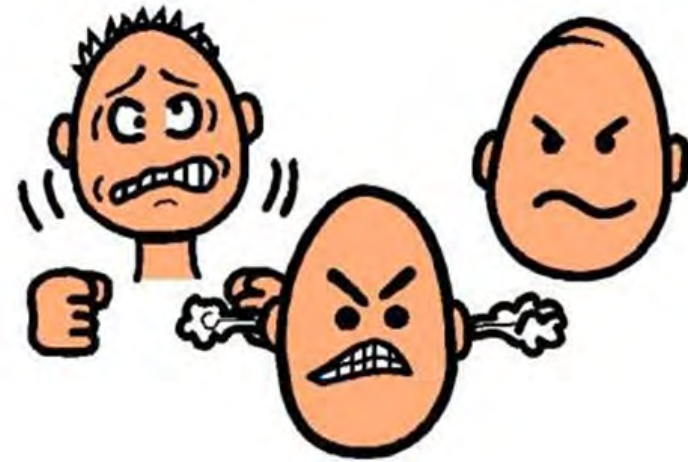
Playing at Wonder Widgets, I may get the most points. I may win the game.



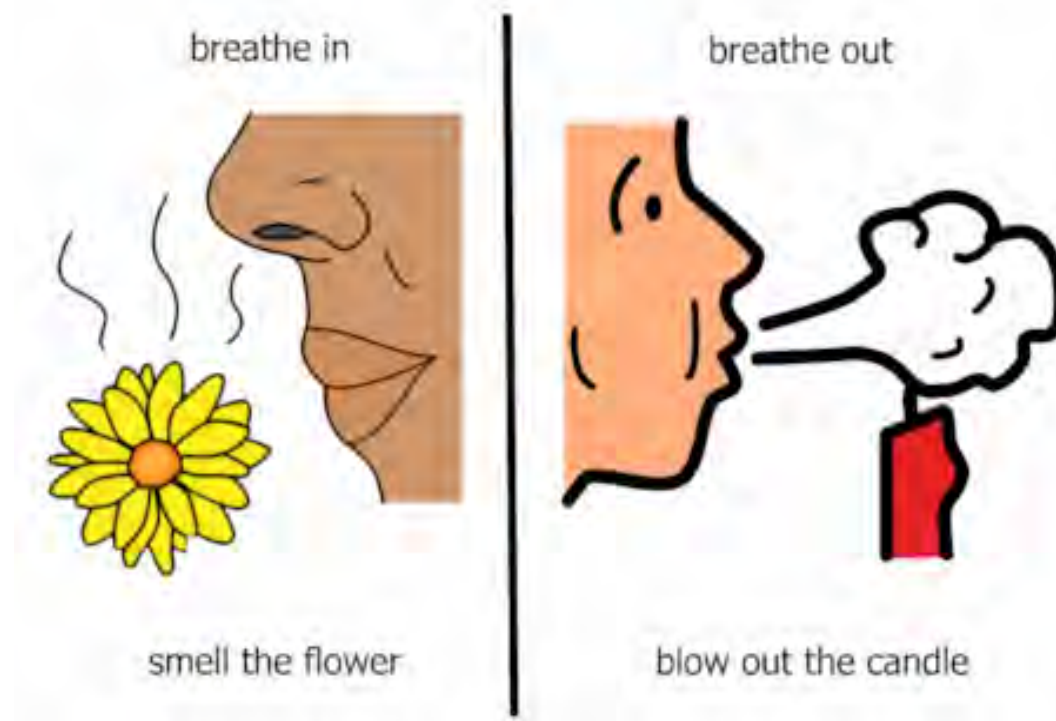
After the game, I can say “good game” or shake their hand.



Sometimes, I may not get the most points. This means I will lose the game. Losing the game can be hard.



I may get upset about losing the game. I can breathe in and breathe out. This may help me. I can do this!



If I am still upset, I can ask for help.

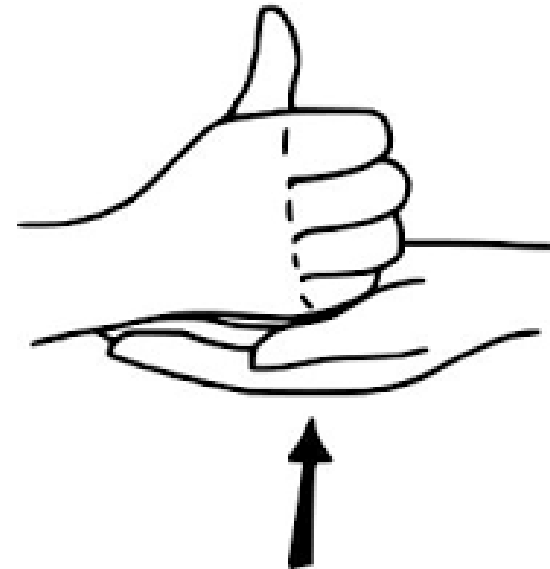
help



My parent or Port Discovery Play Expert can help me.

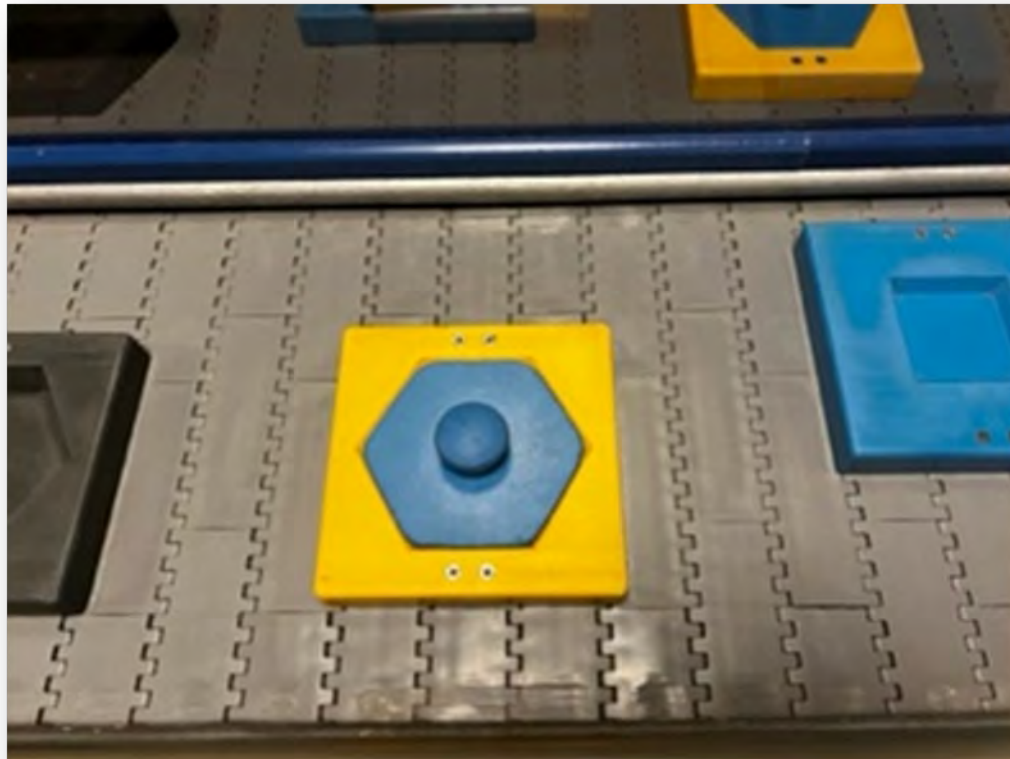


help





Matching the shapes can be fun!



Playing at Wonder Widgets with a kid can be fun!



I can have fun playing at Wonder Widgets! Port Discovery is fun!



## Overview:

Scripted stories help children understand how to respond and interact in unfamiliar situations, activities or events. These stories are written to assist children in social situations. When children are more prepared and understand the expectations of a situation this helps to minimize possible problem behaviors that might occur. These stories can be utilized by teachers, parents and child care providers.

These stories are a tool to help a child prepare for a new situation and to address a challenging behavior within that new setting or situation. These scripted stories can be modified. Real photographs can be used instead of clip art. Please note that you can use real photographs of the child and change the wording to make it more personalized for your child or a student.