



## REQUEST FOR ARTISTIC PROPOSALS SKIES Exhibit

Port Discovery is developing a brand-new exhibit set to open to the public in Fall 2025. SKIES will be a fully immersive, low sensory, calming exhibit themed on the daily sky rotation between the sunrise and sunset and the curiosity invoked by our planet's ever-shifting cloudscape. The design of this quiet space for respite will incorporate the colorful movement of clouds and the cycles of the sun and moon. The exhibit spaces will include reading nooks, a blanket fort building activity, a soft "sunrise" resting zone, and an Aurora Borealis light board.

As part of the exhibit concept, we are seeking RFPs from artists for the creation of two unique artistic elements:

- Blissful Sunrise Mural
- Floral Fabric Wall Sculpture

Applicants may submit an RFP for both projects or for one. Please review the details and specifications for each project, and follow the directions on assembling your proposal packet.

*This RFP is supported in part by the William G. Baker, Jr. Memorial Fund, creator of the Baker Artist Portfolios, [www.BakerArtist.org](http://www.BakerArtist.org).*

### Eligibility and Benefits:

The program is intended for any artist or artist group, 18 years or older, who are successfully able to create a new work within the prescribed timeline. Port Discovery values diversity in age, gender, ethnicity and gender expression as well as diversity in medium.

Selected artists will receive:

- \$2,000 Artist Stipend
- Up to \$5,000 reimbursement for supplies (receipts required)
- Installation support from Port Discovery's Exhibits Staff
- Recognition in publicity and communications about the artwork
- Identifying placard with artist information located near the artwork
- Invitation to attend and participate at the exhibit opening events

### Information Sessions:

All artists are encouraged to attend one of the two virtual information sessions that will be hosted by the museum. The session will include a visual walk-through of the SKIES exhibit to review the proposed artwork locations and the new exhibit's colorways and design.

- **Tuesday, March 11, 2025 @ 11:00am EST**
- **Thursday, March 18, 2025 @ 4:00pm EST**

Sign up to attend a session here: [Virtual Information Session Link](#)

## Timeline:

March 3, 2025	Application period is open
March 11, 2025 @ 11am EST	Virtual Information session held by Port Discovery
March 20, 2025 @ 4pm EST	Virtual Information session held by Port Discovery
March 31, 2025	Application deadline
April 1, 2025	Application review
Mid April 2025	Notification
June 2, 2025	Artwork design draft due to Port Discovery team
June 6, 2025	Artwork design revisions due to Artist
June 23, 2025	Artwork design final draft due to Port Discovery Team
June 27, 2025	Artwork design final draft due to Artist
Mid July 2025	First Installation coordination meeting
Mid August 2025	Final installation coordination meeting
September 2025	Installation/painting
October 1, 2025	Installation/painting completion deadline

## Application Process

Applications will be reviewed by the museum's Leadership Team, Vice President of Exhibits and Facilities, and the exhibit design team at Skyhouse Studios. Selection will be based on the following factors:

- Best fit of proposed mural to the content of the Museum's message and mission.
- The theme and content of the proposed work.
- The professional capabilities of the applicant(s) as demonstrated through documentation of prior work and experience.

## A complete proposal package consists of the following:

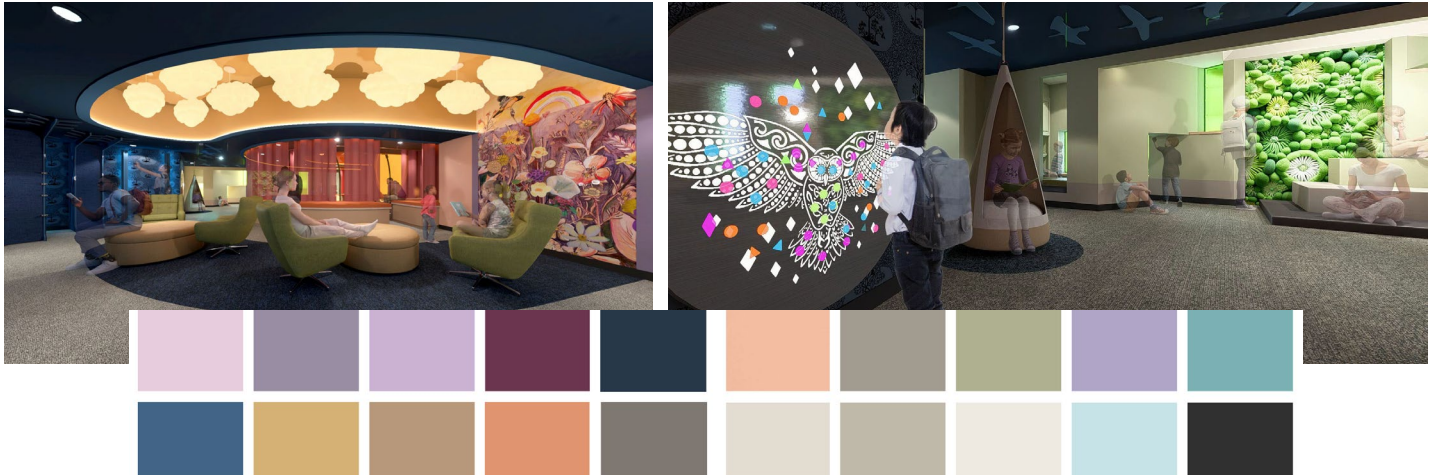
1. Cover Sheet
  - Your full contact information, website, and social media handles.
  - Clearly indicate which artwork you are submitting for: ***Fabric Wall Sculpture, Mural, or Both***
2. Proposal Narrative (3 pages maximum)
  - Introduce yourself as an artist and provide a short biography.
  - Why are you interested in this opportunity?
  - How are you/your work a good fit for Port Discovery Children's Museum?
  - Artwork description (2 pages)
    - Describe the design and themes of your proposed artwork.
    - Include preliminary sketches, along with dimensions and any installation requirements.
3. Resume (2 page limit)
4. Past Artwork Samples – select one of the following:
  - A PDF or slide show with a maximum of 10 images.
  - A PDF or slide show combination with a maximum of 5 images + up to 2 minutes of video or animation.

**Applications must be received by 11:59 pm on March 31st, 2025.**

Save your complete proposal package as a PDF and submit by email to: [hmyers@portdiscovery.org](mailto:hmyers@portdiscovery.org)

## SKIES

The design intent of the SKIES is the notion that we all need spaces to rejuvenate. Spaces that are not filled with to-do's; places that encourage the frantic heart rate to peacefully slow. There is an intentional and defined palette for this exhibit, and it is expected that proposed artworks support the calming effect of the space by coordinating with the theme and complimenting the colors.



### About the Floral Fabric Wall Sculpture:

The Floral Fabric Wall Sculpture will be an interactive exhibit piece that encourages visitors to touch and explore the piece. Our visitors are extremely motivated to engage with all aspects of the museum in direct, physical ways, and this piece will need to be robust and durable. The sculpture will be installed at the same time that the exhibit is being installed and finished.

**Available Wall Space:** 93" high x 61" wide

**Theme:** Maryland's native flora and fauna.

We anticipate that the Fabric Wall Sculpture will need to be repaired over time, so ideally, this piece should be planned, built, and installed in smaller, modular sections that may be repaired and/or replaced easily.



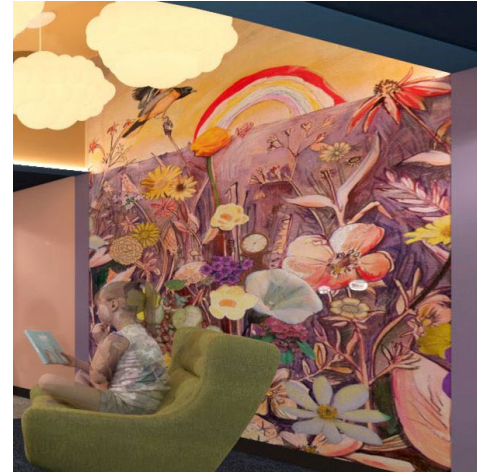


### About the Blissful Sunrise Mural:

The Blissful Sunrise Mural will be a focal point within the “Skies” exhibit, encouraging guest to consciously take a moment and observe. Finding new and exciting moments to enjoy every time they visit the exhibit and experience the mural anew. The mural will be painted at the same time that the exhibit is being installed and finished.

**Available Wall Space:** 115”high x 72” wide

**Theme:** The gentle beauty in the celestial transitions of the sky and calming depictions of Maryland’s native flora and fauna.



### Goals for both Artworks:

- To integrate more artworks into the Museum.
- Deepen Port Discovery’s engagement with Baltimore’s artist community.
- Offer a unique, nontraditional exhibition opportunity for local artists.
- Invite Port Discovery’s audience to contemplate and examine works of creative expression.
- Nurture the next generation of museum going audiences.
- To enhance a new exhibit area within the Museum.

### About Port Discovery

The mission of Port Discovery Children’s Museum is to provide unique opportunities and high-quality experiences that make play accessible, educational, and fun for all. Our work is driven by the vision to foster joy, connections, laughter, and learning through purposeful play. We believe in a world where the value of learning through play is recognized and respected, backed by the science that demonstrates the power of play to transform the lives of children (and their families).

Located in Baltimore’s Inner Harbor since 1998, Port Discovery has served over 5 million visitors as one of the mid-Atlantic’s leading children’s museums. Our core programming includes exhibits and creative activities in our 80,000 square foot museum, access programs for students and low-income families, educational programs and workshops for local school districts, and two generational programming for parents and early childhood educators. On average, the Museum sees 225,000 annual visitors, which includes families, teachers, and students; and its reach includes 22,000+ email subscribers, over 2,200 museum members, and social media audience of approximately 25,000. Over 60% of students who come to Port Discovery on a field trip represent Title I schools. Our geographic reach extends across the region and state, with nearly 60% of our visitors coming from Baltimore City and the surrounding counties, 35% from across Maryland, and the remainder from out of state.

### Questions?

Email Hope Myers, Vice President of Exhibits at [hmyers@portdiscovery.org](mailto:hmyers@portdiscovery.org)